

Denver Public Library's Scavenger Hunt Challenge

Here There Be Monsters

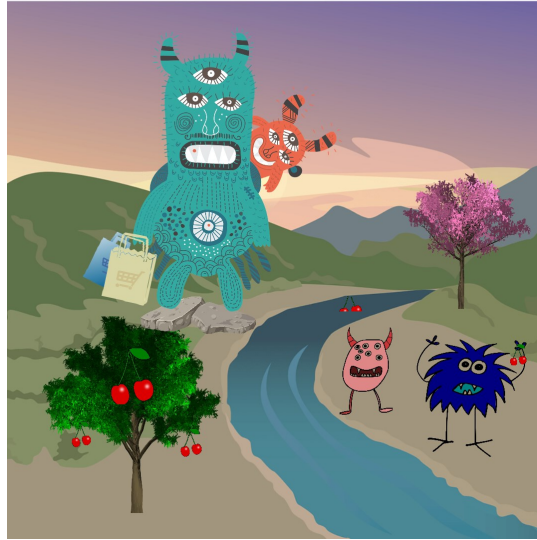
If you enjoy exploring new places and appreciate games with clues, you'll want to participate in this Scavenger Hunt Challenge.

Complete any of the scavenger hunt challenges at participating branch locations and pick up this limited edition coin.



For participating branch locations and instructions, visit denverlibraryadventures.org

Examine the painting below.
What do you see? Write it down here:



The painting has various images that create one picture. The images are clues that let you know which Denver Public Library location it is and where to start your scavenger hunt.

If you don't know which branch location this painting refers to then visit with library staff to have them help you decipher the clues or flip this page over and find the answer.

Did you figure out which branch location it is? If you did, then you're ready to solve the verses that are accompanied with a photo.

The verses will give you a notion of where to find each answer that will ultimately lead you to your goal.

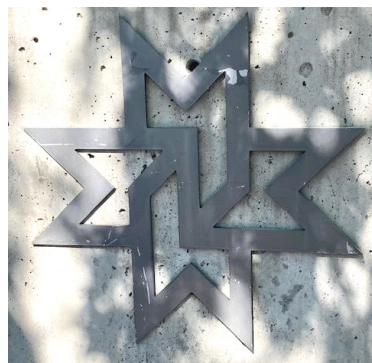
Ready to start? Flip the page to find your verses.





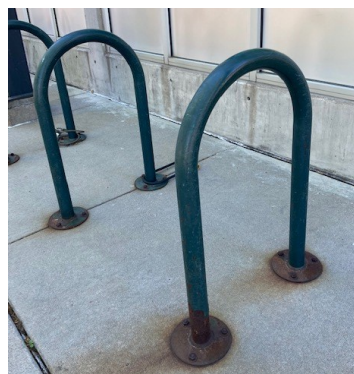
See water splash and spray,
 children dance and play.
 How many do you see?

Write the answer:



You can go up or down.
 Find this star around,
 What wonderful word is right?

Write the answer:



Where metal arches bend,
 Your trip might end.
 What is forever stuck?

Write the answer:



Many monsters you can see,
 one has more arms than three.
 What color is his tongue?

Write the answer:

Did you find all the answers?
 Congratulations! Bring your answers to the branch to pick up your limited edition coin.

If you had trouble finding answers then ask a library staff member for help or look at the key below.

Thank you for completing the scavenger hunt challenge!

Participating branch locations:

Athmar Park	Schlessman
Byers	Sam Gary
Decker	University Hills
Cherry Creek	Valdez-Ferry
Hadley	Virginia Village
Hampden	Westwood
Montbello	Woodbury
Park Hill	
Pauline Robinson	